

Contents

- [News](#) – Updates & meetings
- [Spike2](#) – Copying cursor settings
- [Signal](#) – Set frame display after sampling
- [Spike2 Script](#) – Copy and Paste show/hide channel settings
- [Signal Script](#) – Columnated text output
- [Did you know...?](#) – Digitally signed device drivers
- [Recent questions](#) – Reducing drawing times

News

Spike2 and Signal Training Days

Our U.K. Spike2 and Signal training courses will take place on Thursday 30th April and Friday 1st of May at St. John's Innovation Centre, Cambridge. These training days are for both existing and prospective users of Spike2 and Signal and are suitable for beginners and advanced users. There is also our popular Workshop thread where you can discuss your particular requirements with a CED engineer or programmer in a small group environment.

If you or any of your colleagues would like to attend, please follow the links to view the [training day program](#) and complete the [registration form](#). Please give a short description of the type of research that you do and analysis that you are interested in. This will allow us to tailor sessions for specific requirements.

Training Days in Shanghai

We will also be running training days in Shanghai during the week beginning the 6th of April. These training days will be run in association with Qichi Instruments, distributors of CED equipment in China. For further information please contact Sales@ced.co.uk

The CED Forum

The [CED forum](#) has now been running for 6 months and has over 100 members. Registered users can post questions about software and hardware for the CED team, suggestions for future products and software revisions and browse generally useful information posted by ourselves and other CED users.

Meetings and events

[Australian Neuroscience Society](#)

National Convention Centre
Canberra, Australia
January 27th – 30th 2009

[Biophysical Society Annual Meeting](#)

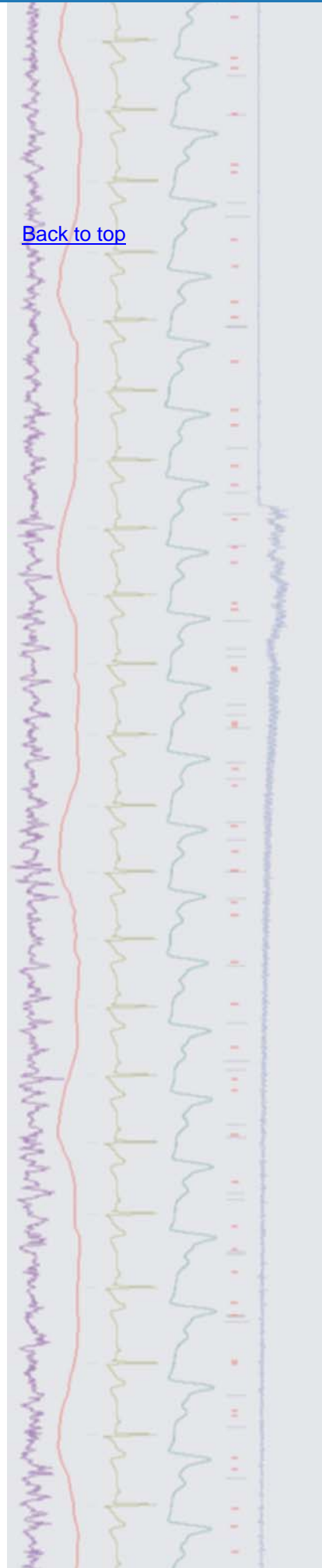
Boston Convention and Exhibition Center
Boston, MA, USA
March 1st – 3rd 2009

[German Neuroscience Society](#)

Goettingen Exhibition Centre
Goettingen, Germany
March 26th – 29th 2009



[Back to top](#)



Latest versions of Spike2 and Signal

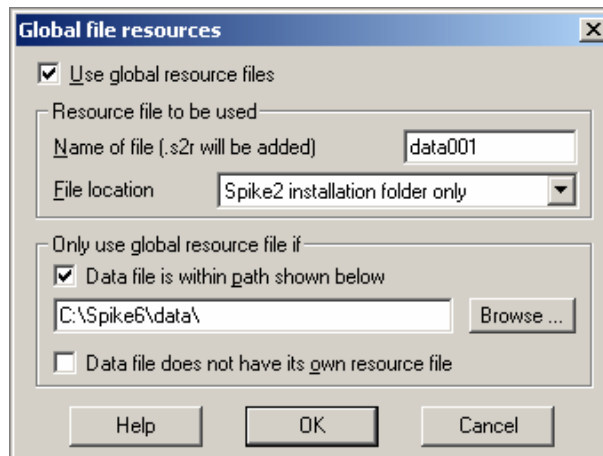
Updates for Spike2 and Signal are available from the [CED downloads](#) page, or by clicking on the links in the table below. Demonstration versions of the latest software are also available.

Spike2 downloads	Signal downloads
Spike2 version 6.10	Signal version 4.03
Spike2 version 5.20	Signal version 3.10
Spike2 demo	Signal demo



- Q. I use active cursors for off-line measurements and was wondering if there was any way to copy settings between data files, rather than having to define the cursor settings for every file I analyse?
- A. Active cursor and display settings for a data file are stored in an associated resource file, with the file extension .S2R, which is saved in the same location as the data file and with the same name so that the file can be re-opened with exactly the same screen appearance and cursor settings it had when the file was closed. You can apply any resource file to a data file in Spike2 from the File menu Resource Files option. The resource file including the cursor settings that you want to use can be applied manually or can be set as a Global resource that is applied automatically.

This example will apply settings from a single resource file to all data files in a given folder. Open the resources dialog and check the 'Use global resource files' checkbox. Type the name of the resource file you want to use (this will have the same name as the file you want to copy the settings from) and set the resource file location from the drop-down list. Additional fields in the dialog allow you to specify which files should have the resources applied. Set the data file path to only apply settings to files in a single folder.



Global resources dialog

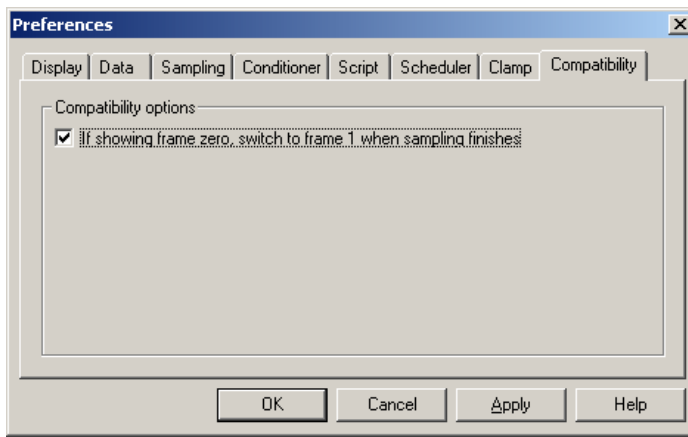


- Q. When sampling with Signal, the data file always displays the last recorded frame when sampling is stopped. I would much prefer that the file displayed the first saved frame by default.
- A. The Edit menu Preferences dialog in Signal is a tabbed dialog that includes a range of different options for the display, sampling and export of data. The Compatibility tab of the dialog contains a checkbox to set the option of displaying Frame 1 rather than Frame 0 once sampling is stopped.

[Back to top](#)



[Back to top](#)



Edit preferences dialog

Further information on preference settings can be found in the Signal on-line help.

Scripts: Spike2

- Q. Is there a quick and easy way to copy the display of visible/hidden channels from one data file to another in Spike2?
- A. The attached pair of scripts, `GetVisCh.s2s` and `SetVisCh.s2s`, provide a quick way of applying the Show / Hide state of channels in one view to others and should be saved in your Spike2\Scripts folder before use. Both scripts add a button to the Spike2 Script bar and display it when first run for "one click" operation. Simply click on the `GetVisCh` button in the script bar to copy the layout of the front view, then click on the destination view to bring it to the front and click the `SetVisCh` button to apply the stored Show /Hide channel settings. You can optionally hold down `Ctrl` when pressing `SetVisCh` to apply, as far as possible, all the characteristics of the source (time ranges, trace colours etc.) to the destination. This script is for Spike2 version 6 only and makes use of the `GHUtils.s2s` script that is stored in the Spike6\include folder during installation.

Scripts: Signal

- Q. I would like an option for text output of Signal data that would print the data from each frame in a separate column for a selected channel. This would make it much easier to perform cross-frame analysis in a spreadsheet package.
- A. The attached script, `FrameCols.sgs`, is an example of exporting a single channel from a Signal file so that the data from each frame is printed in a separate column. The user can select which channel to export from a dialog displayed when the script is run.

Did you know...?

The CED 1401 device drivers are now digitally signed. This allows Signal and Spike2 to be used on a PC running Microsoft Vista x64 and reduces the number of queries when installing in 32-bit Vista.

Recent questions

- Q. I am analysing large files that take a long time to display when I open them in Spike2. Is there a way to stop them drawing all of the data in the file?
- A. You can break out of long drawing or calculation operations in Spike2 using the `Ctrl+Break` keyboard shortcut. This is useful if you have inadvertently displayed or analysed a very large section of data. There is also an option in the General tab of the preferences dialog to ignore resource file X range settings to give a fast initial display by only showing the first second of data when opened.

User group

Try the new [CED Forums](#) bulletin board for software and hardware support

If you have any comments about the newsletter format and content, or wish to unsubscribe from the mailing list for this newsletter, please notify sales@ced.co.uk.



[Back to top](#)

Right-click the script icon and save to disk.

If you have any problems opening the embedded scripts in this newsletter please let us know.

[Back to top](#)

Right-click the script icon and save to disk.

If you have any problems opening the embedded scripts in this newsletter please let us know.

[Back to top](#)